



Thanks for buying the JPEGD 2026 program.

To start please follow all the steps carefully.

BEFORE you do anything, please watch the video. You need to follow all the instructions carefully:

Click on the link to open the Video: <https://youtu.be/yA1etYKzgGQ>

VERY IMPORTANT: Everyone must install the new setups!!

We've made a lot of changes to the old program and you need to install **all the setups** in order for the program to work perfectly.

Please click on the link below to download the setups:

<https://www.rockseries.co.za/jpegd.htm>

You need to install all these setups on the website. After the "downloads" you will find the setups in die downloads-folder.

****Make sure to download and install all 3 setups as well as the ADOBE setups.****


SETUP 1

SETUP 2

SETUP 3:

Install QuickTime
player to open videos

ALSO do the ADOBE installations exactly as in the instructions below:



Microsoft Edge overrules Adobe, BUT you need Adobe to open the 3D-Rotates
Do the following to let Adobe work on your PC:

1. Reboot your PC
2. Go to **add and remove programs and uninstall Adobe Reader.**
3. **Very important:** Click here to download this very important file. You will find it in the downloads-folder. **"Faultprotection"** Right click and open with **Windows Explorer** after the download. Click on it to run and choose yes if they ask.

Download this file. If you do not download and run this file, Adobe will not open the 3D PDF rotates!!!

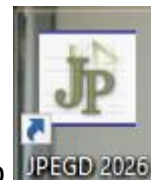
1. Click here to download the correct version of Adobe. Remember to install Adobe after the download.

Download this Adobe file. If not, it will not open the 3D PDF rotates!!!

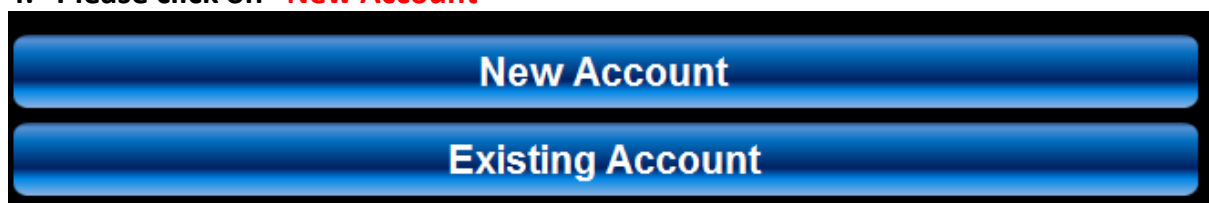
2. Open the **Adobe-icon on the desktop**, click **"accept"**. If they ask, make Adobe the default.

Activation Instructions:

Please make sure to follow all the instructions below **AFTER** you've **COMPLETED** the download and installation: **Everyone must install all the new setups even if you've used it in 2025**



1. Please click on the JPEGD 2026 icon on your desktop
2. Existing users with the same email address and the same computer: (You've used JPEGD 2025), Please follow from STEP 8 (but you also need to install the new setups.)
3. New users and also if your email address has changed, please follow all the instructions below.
4. Please click on **"New Account"**



5. Complete the following screen. Type in your own details.
6. Make sure your email address is correct. You will receive the OTP on that address.

Please complete bellow details:

Please enter first name:

Please enter last name:

Please enter email:

Please enter cell no:

Please enter school name:

7. Click on Register
8. On the next page you will see your email address.
9. **Click on re-send OTP and Go to your inbox to get the OTP and type it into the block provided. (OTP should not take longer than 5 minutes – please check SPAM or Junk folders)**
10. Now click on Login

Please enter email:

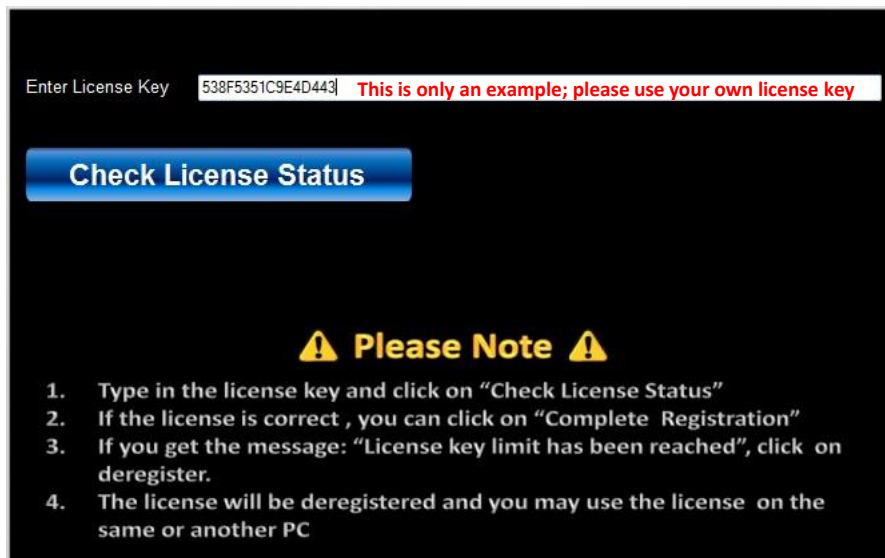
Please enter email: **This is only an example; please use your own email address**

Please enter OTP:

⚠ Please Note ⚠

1. Type in your email address (the same as on the previous page)
2. Please go to your email inbox and get the OTP – You will receive the OTP within 5 minutes
3. Type the OTP into the box provided – **The OTP will be valid for one usage. You may request another on a later date if necessary.**
4. Click on Login

11. On the next page you can Copy and paste your License number from the email into the License key block and click on **“check license status”** and then if all is correct, **“click on complete registration”**

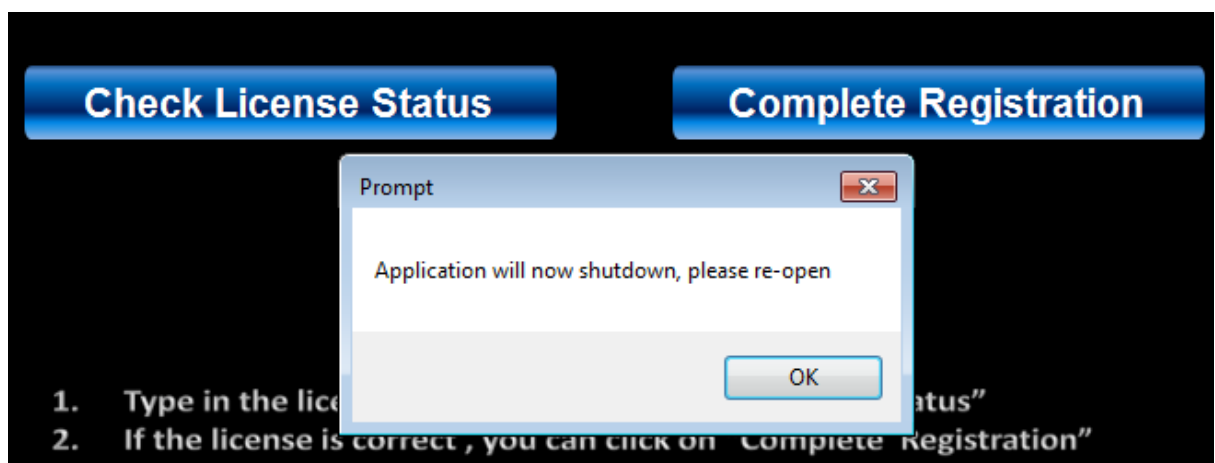


12. If you did not receive an email with your license key, please ask the HOD or teacher in charge of the orders to give you the license key.

13. If you have a problem to get a key, contact

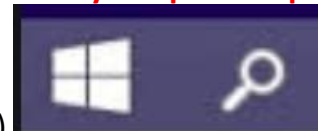
Johan – 072 673 4863 or Pieter – 072 118 1979

14. The application will shut down, click on OK and then re-open



15. Just click on the JPEGD 2026 icon on your desktop.

16. If you do not want to see the yellow block each time you open the program.

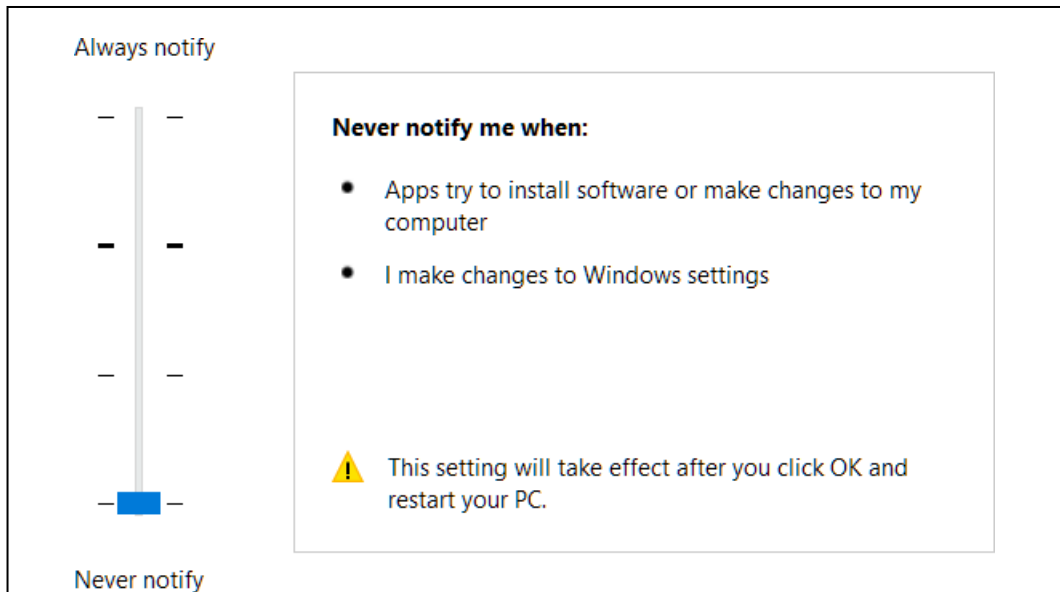


Go to Windows search (next to the start button)

17. Type into search UAC

18. You will see this screen – make sure the blue bar is at the bottom

19. Restart your PC



20. If you need to type in ADMINISTRATOR Username AND Password every time you open the program, ask the IT technician to add the program to the Trusted list

If you have a problem, WhatsApp

Johan - 072 673 4863 or Pieter - 072 118 1979 or Chanine - 0833018159

21. You can also load Anydesk if you have any problems and send a picture of the screen to 0833018159 **after you've made an appointment**

22. Make sure you are connected to the internet

23. If you need a new code, please go to www.jpegd.co.za and buy the code online

24. DBE PAT Guidelines for GR.10 , 11 & 12 will be available from end March 2026

Beste Groete/ Kind Regards
JPEGD Team